

LINK

MARCH 2024

**ALL SAINTS'
HORDLE
ST. ANDREW'S
TIPTOE**

NEWS FROM THE CHURCHES

HORDLE PHARMACY

26 Ashley Lane, Hordle

- Collection of your prescriptions from local surgeries and free deliveries
- Free NHS FLU JABS for eligible people
- Professional advice available

01425 610594

E-mail: hordle.pharmacy@gmail.com

ASHLEY MOTOR REPAIRS

Ashley Crossroads
New Milton BH25 5AQ

General Servicing and Repairs

M.O.T.s, Body Shop

Free Estimates **01425 615989**

To advertise in LINK,

please contact the Church Office
for details:

church.office@hordleandtiptoechurch.org.uk

The Memorial Hall at Hordle



Both halls available for hire.

Up to 170 people

Contact the Church Office 01425 626565 for details
church.office@hordleandtiptoechurch.org.uk

The Church Hall at Tiptoe



The Churches of



All Saints' Church
Hordle Lane
Hordle
SO41 0FB

St. Andrew's Church
Sway Road
Tiptoe
SO41 6FR



All Saints', Hordle and St Andrew's, Tiptoe

- We Worship God in Spirit and Truth
- We Grow in Faith and Fellowship
- We Reach out with the Gospel

Sunday services are as follows:

9.00am Morning Prayer - All Saints', Hordle (1st Sunday of month)
9.00am Holy Communion - All Saints', Hordle (3rd Sunday of month)
10.00am - St Andrew's, Tiptoe (*Holy Communion - 2nd and 4th Sundays*)
10.30am - All Saints', Hordle

Enquiries

For all enquiries, please in the first instance contact the Church Office

Tel: 01425 626565

Or email: church.office@hordleandtptoechurch.org.uk

This magazine is free ... and we hope you enjoy it.

But, if you wish to make a donation (suggested £1) that will be gratefully received or you may like to make a one-off payment of £10. Cheques payable to 'Hordle PCC'.

See the church website - www.hordleandtptoechurch.org.uk

COPY DATE for the April 2024 issue is March 18th

All contributions please to: Christine Warren - christine@claritysound.co.uk

DISCLAIMER

Any view expressed by contributors or advertisers to LINK should not necessarily be taken to reflect the opinions of the Editors or the PCC and we do not hold responsibility for any of the contents.

EVERTON NURSERIES GARDEN CENTRE

The New Forest's Leading Garden Centre. A wonderful selection of Trees, Shrubs, Houseplants, Garden Sundries, Tools and Furniture.

CAMELLIA'S RESTAURANT

Morning coffee, afternoon tea, lunches prepared fresh every day.

EVERTON (on A337 near LYMINGTON), LYMINGTON, HANTS. SO41 0JZ

Telephone: 01590 642155 Fax: 01590 644710

www.evertonnurseries.co.uk E-mail: sales@evertonnurseries.co.uk

OPEN EVERY DAY - MON-SAT: 9.00-5.30 SUN: 10.30-4.30



MCS Property Care

Decorating
Garden upkeep
Property repairs



Hourly and daily rates available

Mark Strode

07979 531864 / mcspropertycare@gmail.com



Please put CLEAN milk bottle tops in the box in the foyers of the Church Halls at Hordle and Tiptoe.

Thank you.

A life well
remembered
lives on.



Diamond & Son *Funeral Directors*

A funeral is a time to say goodbye and to remember the life of a person you love. It's our privilege to be at your side.

We have been funeral directors for generations and when someone you love dies, you can depend on us. We're honoured to be the people you can turn to, even at the hardest of times.

You can talk to us any time, day or night or for further information visit us at

www.diamondandsonfunerals.co.uk

Diamond & Son
Holbury

191-195 Long Lane
Holbury SO45 2PD
023 8089 4124

Diamond & Son
Lymington

9 Lower Buckland Road
Lymington SO41 9DN
01590 672060

funeralpartners.co.uk



Funeral Partners

When replying to Advertisers, please mention "LINK"

Welcome to the March edition of LINK



I'd like to open this month's LINK with a huge welcome to All Saints' and St Andrew's new youth and children's worker, Anya Bowker!

It's likely that by the time you open these pages, Anya will have moved into the area ready to start her employment at the churches on March 3rd.

It has been a long journey from framing the vision to create a youth and children's worker role, through to a successful appointment and I want to thank, once again, all those who have been praying, working and financially contributing towards this goal.

Jesus once looked out at the crowds of people in desperate need of the gospel and told his disciples, *'The harvest is plentiful but the workers are few. Ask the Lord of the harvest, therefore, to send out workers into his harvest field.'* (Matthew 9:37-38). Well, we've asked, we've stepped out in faith, and God has answered.

So we come to a very exciting season in the life of our congregations as we wait to see how God will develop our life together and especially our work with under 18s, over the coming months. Do come along and say hi to Anya at one of our congregations over the coming month, and do, please, continue to pray for God to bless her ministry amongst us as she settles in to life in our parish.

God bless,

PAiC

*'What we are is God's gift to us.
What we become is our gift to Him.'*

Sunday Services for March 2024

All Saints', Hordle

Sunday	3rd	9.00	Morning Prayer
		10.30	Family Communion
Sunday	10th	10.30	Family Worship - Mothering Sunday
Sunday	17th	9.00	Holy Communion
		10.30	All Age Worship
Sunday	24th	10.30	All Age Worship - Palm Sunday
Sunday	31st	10.30	Easter Day Communion

St. Andrew's, Tiptoe

Sunday	3rd	10.00	Morning Prayer
Sunday	10th	10.00	Holy Communion - Mothering Sunday
Sunday	17th	10.00	Morning Prayer
Sunday	24th	10.00	Holy Communion
Friday	29th	12.00 noon	Good Friday Meditation
Sunday	31st	10.00	Easter Day Communion

Calendar for March 2024

Prayer Meetings in March

Monday	4th	11.00	Prayer meeting	Memorial Hall
Mondays	11th, 18th, 25th	11.00	Zoom Prayer Meeting	

Little Angels	5th, 12th, 19th, 26th	9.30 - 11.30	Memorial Hall
Village Voices	6th, 20th, 27th	7.15	Hordle Pavilion
Coffee at Potting Shed	8th and 22nd	10.30	Potting Shed
Rooted (Years 5 & 6)	24th	5.30	Memorial Hall
Tea @ 3	21st	3.00	Memorial Hall
Luncheon Club	7th	12.30	Memorial Hall
Quiet Garden	21st	9.50	Rodgers
Ladies Spring Brunch	9th)		
Fun and Fellowship	12th)		
Easter Egg Hunt	23rd)		Details of all these events - see later in LINK
Bring and Share lunch	24th)		
Maundy Thursday Meal	28th)		
Children's Easter Event	29th)		

Change of All Saints' Service Patterns

In 2024 the pattern for all age worship at the 10.30am service is changing, which also affects the pattern for the 9.00am services. This is to accommodate the timings of school holidays and long weekends this year. The new pattern for services at All Saints' is:

1st Sunday	9.00am - Morning Prayer 10.30am - Family Communion
2nd Sunday	10.30am - Family Worship
3rd Sunday	9.00am - Holy Communion 10.30am - All Age Worship (in the Memorial Hall)
4th Sunday	10.30am - Family Worship

Happy Mothering Sunday

as we remember our own mothers, and the mothers we are!

"She is clothed with strength and dignity; she can laugh at the days to come. She speaks with wisdom, and faithful instruction is on her tongue. She watches over the affairs of her household and does not eat the bread of idleness. Her children arise and call her blessed."

Proverbs 31: 25–28



From the registers for February

Funeral: 15th February Richard McCorduck

We send love and sympathy to Doreen and Richard's family

*Thanks to Angie Gammon for this wonderful **cover picture** from their holiday.*

Mirror Lake in New Zealand..

Ladies' Spring Brunch

Saturday 9th March

9.30 am £5

Brunch, craft and reflection
from Anya our Children and
Youth Worker

Fellowship and Fun

Tiptoe Church Hall

March 12th

2.30 pm

Cost £1.50



MAUNDY THURSDAY MEAL

THURSDAY 28TH MARCH
7.00PM
MEMORIAL HALL, HORDLE

SIGN UP AT CHURCH OR CALL THE OFFICE

Bring and Share lunch

Sunday 24th March

12 for 12.30pm

Tiptoe Church Hall

Both congregations are invited to
join us, but please do sign one of the
lists in the churches beforehand.

EASTER EGG HUNT

SATURDAY 23RD
MARCH

10AM-12NOON

HORDLE VICARAGE
GARDEN

ALL AGES
WELCOME



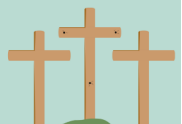
GOOD FRIDAY FAMILIES EVENT

FRIDAY 29TH
MARCH

10AM

MEMORIAL HALL

Games
Crafts
Refreshments



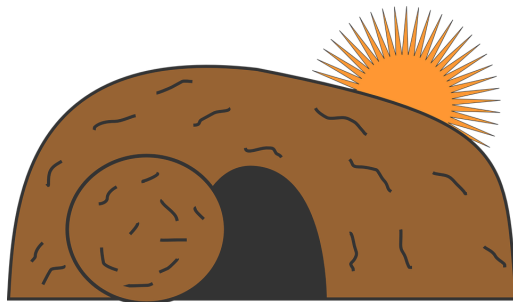
THE STONE IS ROLLED AWAY

The stone is rolled away, the Lord's body isn't there -
If you stoop and look inside, you will find the tomb is bare!
Only the linen grave clothes show just where He lay,
But He Himself is risen, this glorious Easter Day.

An angel brought the message that Jesus Christ was risen,
For even death itself could not hold Him in its prison:
For three dark days He lay there, after sin had done its worst,
And then, triumphant, glorious, His bonds asunder burst!

To the puzzled, frightened women the angel gave the news,
And bade them find His friends, who lay in hiding from the Jews:
Bewildered, disillusioned, they had passed these days in gloom
In the safety and seclusion of the silent Upper Room.

'Come and see!' the women called, 'the stone is rolled away!
The night is past, the Master's ris'n to greet the glorious day!
The news must be repeated until everyone is sure
The Master's risen and alive - today and evermore!'



Happy Easter to you all!

Tiptoe Burns Night - You had to be there!!!

This wonderful celebration on 19th January began with a warm welcome and the 'clapping in' of the Haggis; sadly a Piper wasn't available!

An incredible spread of neeps and tatties, Haggis, which I'm reliably informed has 2 short legs and 2 long, proving a challenge to catch!!!

The food was delicious and as a non-haggis eater, I enjoyed a tasty chicken casserole that demanded seconds!! (and I wasn't the only one!!!)

Douglas enlightened us to Rabbie's past (somewhat chequered) but who had such a talent and gift and deserving of his reverence.

A true education!

It was a great opportunity for fun and fellowship, cementing relationships and meeting more folk.

How wise scripture's advice, not to neglect meeting with other believers!

I hope the Ed will allow me to officially request a repeat occasion in 2025! with the caveat that each partaker can peel a neep or tattie!!!???

'My love is like a red red rose', his most popular song, was beautifully read to us after the supper by Anne McMurtry.

Huge thanks from us all!!!

By an elusive Haggis



Note for the Sassenachs amongst us—

Robert Burns (25 January 1759 – 21 July 1796), also known familiarly as **Rabbie Burns**, was a Scottish poet and lyricist. He is widely regarded as the national poet of Scotland and is celebrated worldwide.

Burns Night, in effect a second national day, is celebrated on Burns's birthday, 25 January, with Burns suppers around the world, and is more widely observed in Scotland than the official national day, St. Andrew's Day.

PCC Day in September 2023 ... going forward

The PCC spent a day in September last year discussing how to implement the already established Vision for our parish over the coming years.



Before the day itself a lot of background work went into doing SWOTS (Strengths, Weaknesses, Opportunities and Threats) on 14 topics which were then collated.

Each member was asked to enumerate the items that stood out as being important and deserving of more thought and attention.

There was a wonderful common agreement on four main topics to take forward, with a fifth, children's and youth work, to be taken up when Anya is in post.

Four task groups have been set up to work on these four areas:

1. **COMMUNITY:** How will we increase our contact with and ability to share faith with our neighbours?
2. **SERVICES:** How will we schedule and locate services of a variety of styles that engage new and existing congregation members?
3. **DISCIPLESHIP:** How will we create a pathway for spiritual growth to help new believers and old to grow in Christ? How can we care for each other?
4. **BUILDINGS & TECHNICALS:** How can we make the most of our facilities to meet the vision?

In a recent sermon Phil encouraged the congregation to pray for each group.

In the forthcoming Lent series we will be discovering how we can each play our part.

Mary Moynagh

Pancake anyone?

On Shrove Tuesday at Tiptoe we enjoyed a Pancake Party! Well, perhaps not a party - but it was fun, and we enjoyed the pancakes!

Having shown off our ignorance in a short pancake quiz, there was a 'tossing the pancake' competition. Some were good at it ... others need a little more practise! But we all enjoyed eating our pancakes, enhanced by an array of toppings.

Googling afterwards yielded the information that the World famous Pancake Race in Olney, some 12 miles from Milton Keynes, dates back to 1445, and is only open to ladies over 18 who live or work in Olney. The race is followed by a Shrivng Service. One of the hymns traditionally sung is *Amazing Grace* which was written by John Newton when he was priest-in-charge in Olney. Who knew all that - every day is a school day!

Thanks, as ever, to Jan and Chris Benson for organising the 'party'.

Date of next Fun and Fellowship meeting is 12th March.



The photographer regrets not catching any pancakes in the air!



HORDLE EXPLORERS

The weather may still be chilly but that hasn't stopped the fun in Team Wild. It's great to see the children arriving all wrapped up everyday and ready to play and enjoy both inside and outside.

The children have been enjoying working together to problem solve and explore the wheeled trolleys. It has been wonderful to see them sharing ideas and helping each other, it is definitely the beginning of some

lovely friendships being made together.

The children enjoyed exploring colours and textures on our painting sensory board. Everyday they added a little bit more and it became a beautiful work of art!



The Wild



There has been lots of creativity in Nest this winter too.

Some of the children decorated stones using felt pens, and some have been using chalks on our chalkboard outside.

There has also been some super spotting - finding lots of natural materials to add to our playdough or to use with paint.



The Nest



Taking Steps ...

December, January and February can be very challenging months following on from all the preparations and celebrations enjoyed, maybe, in December, or can confirm the isolation felt while all others are seemingly in the bosom of family and friends.

Chatting to several folk at checkouts, on dog walks and friends, these months can present a challenge to socialise and even get out and about. The persistent rains, flooding, the icy blast winds, black ice and minus temperatures are all great deterrents to making effort required to connect, especially those who live alone.

It's good to be mindful of those who are isolated or even those restricted in travelling, also those who seem to present OK, but behind the smile can be another story.

As a church we are commissioned to look after each other and to reach out into the Community, giving hospitality, caring and meeting practical needs. This often means unsettling our comfort zones and, as well as financial giving, give a portion of our time to God's prompting and awareness of others. Thankfully we have many folk gifted in reaching out. But those who feel stranded also need to take steps. The first is always the hardest - even to make a decision to ask for help, pick up the phone or text.

Sitting at Highcliffe viewing the beach, the outcrop of breaker rocks took my focus and reminded me of folk who indeed feel like an island at times and feel out on a limb or just battered by the waves.



Turning, the view was of steps framing Hengistbury Head, again an isthmus but attached and connected by a ferry and a road.

It encourages us all either to take first steps or take a different route to become more active at times when circumstances seem to mitigate against us.



Just a thought, whilst musing on how inclusive Our Father in heaven is and underpins us all with His infinite love always.

An Observer

During Lent, All Saints' and St Andrew's will be looking at a theme of **DELIBERATE DISCIPLESHIP**

Christ calls his followers to take up their crosses and follow Him. In other words, to follow Christ faithfully will sometimes involve deliberately choosing to go Christ's way even when our own preferences might lead us in a different direction.

We will introduce the theme on Feb 25th, before looking at three important areas of life over the following Sundays:

March 3rd – **Prayer**

March 10th – **Serving**

March 17th – **Giving**

Along with our Sunday services, our Bible study groups have been invited to follow a course called Living Christianity, which will help us consider how we can be deliberate about following Christ as citizens in wider society. Do join us on Sundays or if you'd like to enquire about small groups, email vicar@hordleandtiptoechourch.org.uk.

The LORD
is my
Shepherd

(Psalm 23:1)

This month Kate Pryde looks at
verse three of this psalm ...

*He restores my soul;
He leads me in paths of righteousness for his name's sake.*

Have you ever felt that the bottom has dropped out of your world? Maybe there is a choice of paths to follow and neither seems what you judge to be Christian?

It is in these times that we can be most aware of the truth of these words. We can find that God, through our faith in Jesus, his Son, can restore us. Restore us to think again and to think aright about those choices, leading us into right thinking. It is comforting to know that even when we stray from those paths of righteousness that God will restore us because of his amazing love.

Jesus representing God, and being himself the Good Shepherd, will find us and restore us into his way of life. God himself wishes us to be reconciled to Himself and sent his Son as an atoning, redeeming sacrifice that we might be washed clean of all our wrong choices and our souls restored and renewed. Forgiven, not because we make the right choice, but because we are chosen, as John 15:16 says:

*'You did not choose me, but I chose you and appointed you
to go and bear fruit'*

The fruit of love, joy, peace, patience, kindness, goodness, faithfulness, gentleness and self-control. (Galatians 5:22). As we exercise these gifts, often demanding effort from us, so we follow our Saviour in obedience to his command to love God first and our neighbours as ourselves.

What will be YOUR

Offering to God?

The TIP Level ... your small change for God?

The Entertainment Level ... give when you go?

The Good Intention Level ... you will give more when you have more to spare, provided it won't interfere with anything else?

The Christian Level ... systematically, conscientiously, readily and willingly?

Lay Vocations Morning

Saturday 6th April, 9.30am – 12.30pm

All Saints Church Hall, St Leonards & St Ives BH24 2LS



Do you think God might be calling you to use your gifts to serve Jesus Christ? But unsure of what your next step might be?

Join us at All Saints Church Hall, St Leonards & St Ives where Bishop David will share about God's calling on our lives and how we can respond to that call. The Winchester School of Mission team will share about the pathways available and afterwards the team will be on hand to answer your questions.

- Do you already serve or want to serve but would value training and networking opportunities? – Come and find out more about the Bishop's Commission for Mission (BCM) available in Pastoral Care, Worship, Children, Youth & Families Ministry, and Beyond Church Walls.
- Do you feel called to preach regularly in your church? - Our Bishop's Permission To Preach programme could help you flourish.
- Would you like to explore licensed lay ministry? - We can help you explore the pathways available.

All are welcome to join us for this morning, designed to help you prayerfully consider your response to God's call on your life - no strings or expectations attached.

Please contact Tracey Nicholls via at tracey.nicholls@winchester.anglican.org to book your place.

THOUGHTS FROM MY GARDEN ...

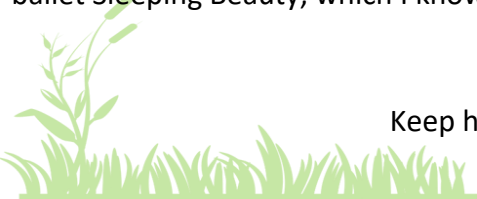
I shall be glad to see the end of February! I think it is a miserable month, usually wet and stopping me from getting out into the garden ... but the daylight *is* getting longer. The rain is pouring down at the moment.

I have just been to the Lake District for a few days to visit my daughter. We went up just before storm Ischer came through and then a day later Jacqueline, causing the roads to flood. Said daughter has been living in The Lakes for some years and has 'seen it all before'. She just puts her wellies on and wades through the water to see if it is too deep to drive through!

It is nice to see the daffodils flowering and the blossom on the trees in the hedgerows. Life could be a lot worse when you think of the people living in war torn countries.

The potatoes are in the spare bedroom chitting and the shallots are in pots in the greenhouse starting to make roots. Soon the weather will be dry enough for me to get out into the garden and get the soil ready to plant. I have just used the last butternut squash grown last year - it does make good soup. I have started using frozen apple made from the fallers of the Bramley apple tree.

Tomorrow, I will be having my Christmas present! We are going to see the ballet Sleeping Beauty, which I know I shall enjoy.



Keep happy, the sun will soon shine more!

If your knees begin knocking, kneel on them!

A Recipe for Life

1 cup good thoughts	2 cups sacrifice
1 cup kind deeds	3 cups forgiveness
1 cup consideration for others	2 cups well beaten faults

Mix thoroughly and add tears of joy and sorrow and sympathy for others. Fold in 4 cups of prayer and faith to lighten other ingredients. After pouring all into your daily life, bake well with the heat of human kindness. Serve with a smile.

Freda Chamberlain has been re-reading a recipe book compiled by her previous church (Trinity Church in Ringwood). She has suggested several recipes for us, which will be included in LINK in forthcoming months.



QUIZ!



QUIZ!

**SATURDAY 23rd MARCH 7.00pm
in the MEMORIAL HALL, HORDLE**

to raise money for OAKHAVEN HOSPICE

£10.00 per head to include FISH and CHIP SUPPER

**(there will be a veggie or sausage alternative
which must be ordered at the time of booking)**

Please bring your own nibbles, drinks and glasses

TEAMS OF 6-8 (but no more!)

Come as a group, or individually and we'll find you a team.

**Contact: Jo Cropp 07759 177014 / jocropp@hotmail.co.uk
or sign the list in church**

RESTORING OUR HEDGEROWS



AT LAST, the vital role of hedgerows in our countryside is recognised to provide homes and corridors for **wildlife**. Over many years farmers have uprooted hedges to create larger fields for the latest agricultural machinery, while the scientists have recorded the decline of native birds, insects and small mammals. Now the UK's Climate Change Committee recommends that hedgerows in Britain be increased by 40% to **help reverse this decline in biodiversity** and to **tackle the climate emergency**.

Who doesn't enjoy Spring blossom, and Autumn berries? But did you know: **hedgerows capture and store vast amounts of carbon dioxide** in their roots, leaves and in the soil? Hedges can store up to 13 million tonnes of carbon, offsetting $\frac{1}{4}$ of the yearly emissions from UK farming! They slot easily into the landscape; provide **an extensive, connected, *natural* nature reserve**; manage the flow of water to reduce flood risk; and **protect crops and animals from extreme weather**.

Hedgerows also keep us healthy capturing the tiny particles that create air pollution. Increasing *urban* hedgerows by 40% could see a reduction in air pollution with remarkable health benefits of £5 million a year.

Here are volunteers planting "whips" at St Andrew's to contribute to the countrywide hedgerow restoration project.



We shall be looking for opportunities for hedging at All Saints' Church too.

EcoChurch Team

Life isn't boring for a Mission Partner volunteer



Late Autumn sunshine lights the New Forest as I make my way to start a day of speaking engagements with Pastor Pete's flock. When the first engagement is over we meet, over coffee and biscuits, with some of his leaders to discuss what resources we can offer to support their ministry. Time then for a very quick lunch break in a Garden Centre where we chew the fat over topical Faith issues before moving on.

A small group of inquisitive donkeys help to make up the congregation at our next venue. This is a relatively short working day for Pete compared with his twelve-hour Sunday workload.

One wet morning I find myself in the car park of an inner city church - the only sound of life is a vacuum cleaner. Daron, dressed in T shirt and jeans, introduces himself as the vicar, church cleaner and PCC secretary all rolled into one. He and I share the thirty minute preaching slot where he speaks about being prepared for Jesus' return, joking about sleeping with a baseball bat under the bed. When I look at the nods of understanding coming from his congregation, I realise it's not a joke. Our team work is appreciated by his congregation of 65, up from 15 after Covid and he takes even more time to minister to a couple leaving a different faith to join his church.

Another mid-winter morning finds me on more local turf. Arriving by 8.45, early for me, I am just in time to chat to some of the 8.00 service folk before we launch the 9.15 service, robed choir and wonderful music for a packed church. You have ten minutes Tim, Lee tells me, twelve at the longest. The tech works, thanks to Brian the tech guru, and we finish spot on at 10.15. Time for Lee to prepare for his third of what will be five services on a regular Sunday, while I get to chat with people. Soon we are back to the sound of Getty music played by the Church Band and another 'gig'.

These experiences remind me just how committed and varied God's army is, following and worshiping our Lord in our own very special, personal ways.

Great British Spring Clean Litter Picks

Saturday 23rd March 10am – 12pm

Meet at Hordle Pavilion, Vaggs Lane or
Everton Pavilion, Frys Lane

All equipment provided
Refreshments 11am – 12pm
Everyone welcome!
(Children must be accompanied by an adult)



For details call 01425 611 119 or visit: hordleparishcouncil.gov.uk

Organised by:  Hordle Parish Council  New Forest District Council  Parish of Hordle and Tiptoe

REPAIR CAFE

TOSS IT?
NO WAY!

REPAIR CAFÉS IN 2024:

- SATURDAY 20TH APRIL
- SATURDAY 20TH JULY
- SATURDAY 12TH OCTOBER

ALL AT ST SAVIOUR'S CHURCH HALL

Help us reduce the number of items going to landfill and help yourself by continuing to use your things!

Have you got something that just needs a minor repair to keep it in use? Maybe a frayed buttonhole but you don't know how to mend it? A small electrical item that needs a new switch? A kitchen tool that needs its handle mended?


Have a coffee and cake while you're there and have a chat to the repairers...

A donation towards our running costs would be most welcome!

Looking forward to seeing you on Saturday 20th April!

WWW.GREENERBROCKENHURST.ORG/REPAIRCAFE

greenerbrockenhurst@gmail.com greenerbrockenhurst 



Hordle Gardening Club

Do you:

- Have an interest in plants and gardens?
- Like growing flowers, fruit, vegetables?
- Want to learn more?
- Want to meet new people and have a fun, sociable evening out?

Do come along to one of our meetings and see if you would like to join us. We have **regular talks** on a variety of subjects, our own **Show**, trips out to **visit other gardens**, and **social events** too.

Meetings are on the **4th Friday of each month** (except August and December) at the Hordle Pavilion. Doors open at 7:00pm and the talks start at 7:30pm.

Guest attendance £3.00
Annual membership £8.00

Check out our website for more information

www.hordlegardeningclub.co.uk

Or email:
hordlegardeningclub@outlook.com

2024 Meetings

Friday 23rd February – talk
'New beginnings – Gravel to Grebes' with Mike Read

Friday 22nd March – talk
'Soft Fruit' with Wilf Simcox

Friday 26th April – talk
'Big ideas for small gardens' with Martin Cox

Friday 24th May – talk
'Heavenly Hostas' with John Baker

Friday 28th June – talk
'Building and planning a rockery' with Roger Hirons

Friday 26th July – Closed show
(Members only)

Friday 27th September – talk
'Hanging baskets, tubs and maintenance' with Ray Broughton

Friday 25th October – talk
'How to grow roses successfully' with Glenn Duggan

Bring your used Stamps to
Hordle Pavilion Saturday
morning Café or All Saints'
Memorial Hall at Sunday
Service

Collect stamps for RNIB and
make a difference to blind
and partially sighted people.

Be a stamp collector for a good cause!

If you receive cards and letters through the post, could you save the stamps and drop them into the box at the weekly **Hordle Pavilion Community Café or the Church Memorial Hall**. The **RNIB** will turn them into funds to help people living with sight loss.

Important! Trim stamps leaving approx. 1cm border around all sides!



T.H.E. Greening Campaign

Tiptoe. Hordle. Everton

hordleparishcouncil.gov.uk/t-h-e-greening-campaign

Update - Spring 2024

COME AND GET INVOLVED – EVERYONE IS WELCOME!

The National Lottery is funding the Greening Campaign and its expert partners to provide advice and support to 20 new communities in Hampshire to tackle Climate Change.

We have been chosen to be one of those communities!

Hordle Parish Council in conjunction with Hordle Eco Church are inviting you and any representatives from local groups and organisations to attend a Public Meeting to learn more about T. H. E. Greening Campaign and to have your say about what happens next!

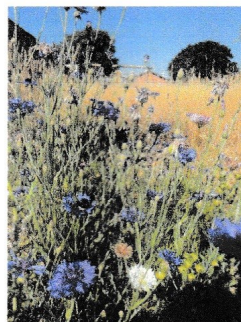
The Greening Campaign is a blueprint for community action on Climate Change which brings expert support to a programme of activities. This programme has the support of our County Council and Wildlife Trust and we are following in the footsteps of 250 other communities! Our aim is to take this hugely successful campaign and introduce it in Tiptoe, Hordle and Everton (T.H.E).

To kick off the campaign, we are holding a **Public Meeting** where the programme will be explained in detail by Terena Plowright, founder of The Greening Campaign. The focus is on 5 pillar areas: Space for Nature, Health Impacts of Climate Change, Waste Prevention, Energy Efficient Warmer Homes and Cycle of the Seed.

This article is a **personal invitation** to you and all community groups, everyone who lives in our villages to come along and find out more. All businesses, churches and faith groups, schools, interest and leisure groups plus residents are welcome. We believe this is an important campaign that could benefit us all – Individuals, families, organisations, businesses. We would be delighted to see you at the event.

Light refreshments

We aim to make this a concise 1 hour meeting with drinks and nibbles. There is no need to RSVP, but if you are certain that you, or any representative will be attending, please



let us know so we can plan for refreshments. Simply phone **01425 611 119** or e-mail:

admin@hordleparishcouncil.gov.uk

Public meeting: 7.30pm, Tuesday 30th April, in Hordle Pavilion, Vaggs Lane

HORDLE VILLAGE ACTIVITIES

Hordle W.I. meets on first Tuesdays at 2pm in the W.I. Hall, Ashley Lane, Hordle.
Contact: Yvonne **01425 615284**

Hordle Gardening Club meets on Fridays at 7.30pm in the Pavilion, Ashley Lane, Hordle. Contact: Secretary, Sue Winter, **01425 610171**

Hordle Flower Club meets 2nd Wednesday in the month at The Pavilion, Vaggs Lane. 7pm for 7.30pm. Contact: Denise Gibb **01590 642804**

Hordle Photographic Club meets on 2nd and 4th Mondays in the Church Room at All Saints'. Contact: Ian Blundell **01425 629838**

Hordle Volunteer Driver Group (previously known as Hordle Voluntary Care Group) provides transport for people in Tiptoe, Hordle and Everton to medical appointments when they cannot use public transport. We can also take relatives to visit patients in hospital. We would welcome enquiries from anyone who can spare a few hours to help us support our clients. Please contact our Coordinator on **0345 388 9063** for more information about volunteering, if you need transport to an appointment or you can email: hordledrivergroup@gmail.com.

Please note that our telephone number has changed from 0845 to 0345

Dial-A-Ride provides a door to door shopping service for people who find it difficult to use the bus service. Lymington on Tuesday and New Milton on Friday. To book the service ring **0845 602 4326** (local call).

TIPTOE VILLAGE ACTIVITIES

SCARF Youth Club, 6.30-8.00 for children with special needs aged 11-16.
Contact: Lucinda, 07874 221249

Young Farmers' Club, Tiptoe Contact: brock.hantsyfc@gmail.com

Tiptoe Community Coffee Morning 10 am - 11.30am on Wednesdays at Tiptoe Young Farmers' Hall.

Think **BIG** ... but don't think other people **SMALL** !

Capt. Scott



**HELP YOUR
NEIGHBOURS**

in Everton, Hordle and Tiptoe

We provide volunteer drivers to take local residents to medical appointments, surgeries and hospitals etc.

- ⊗ You decide when you are available
- ⊗ We pay you 50p per mile
- ⊗ We provide personal liability insurance
- ⊗ We cover car insurance excess and no claims discount

For more information contact Ian on **07980 268318**
or email: hordledrivergroup@gmail.com

If you are unable to make use of this leaflet please pass
it to someone who may be able to help

www.hordlevolunteerdrivergroup.co.uk



**MOULOND
DRAINAGE**

- Drain Unblocking including toilets, baths and basins
- Drain and Sewer Cleaning
- CCTV Drainage Surveys
- Drain Repairs
- Non Dig Repairs (Drain relining)

Call Your Local Drain Specialist

07368295202

Proud members of
Checkatrade.com
Where reputation matters

DJB
PLUMBING

All work undertaken,
No job is too small!

24 Hour Callout
38 Years Experience



Call David
079731 21984



Jon Dowdeswell FMAAT



Davis & Co.
New Forest Accountants

Here to deal with all your accounting requirements!

- ACCOUNTS PREPARATION
- COMPLETION AND SUBMISSION OF SELF ASSESSMENT TAX RETURNS
- PREPARATION OF VAT RETURNS
- WAGES AND SALARY PREPARATION

Brightley, Middle Road, Tiptoe, Lymington. SO41 6FX

Tel: (01590) 681174 Fax: (01590) 681118

E-mail: davisaccountants@btinternet.com

www.davisaccountantsnewforest.co.uk

When replying to Advertisers, please mention "LINK"

Live-in care

there for you
when you
need it



Our live-in caregivers provide not only **support with activities of daily living** but also companionship, which can help **combat loneliness and isolation**.

Live-in care can provide peace of mind for family members who may worry about their loved ones living alone. Knowing that a trained caregiver is there to aid and support can be comforting and reassuring.

Live-in care can be more flexible than other types of care arrangements, allowing clients to maintain their independence while still receiving the support they need.

If you don't require live-in care but do need **some extra help**, we may be able to provide high-quality domiciliary care in your home. Contact us to find out more.

Find out more by visiting
OakhavenCare.co.uk

or call us for a chat on
01590 646 440



www.abreelectrical.co.uk

mbl:07821 973065

31 Osborne Road New Milton BH25 6AF

abre | electrical
benjamin renouf

Specialists in Fault Finding, Consumer Unit Upgrade, Lighting
Immersion Heaters & Boiler Heating Controls

Landlord Electrical Certificates & Electrical Installation Condition Reports

All aspects of Electrical Work undertaken

All work to 17th Edition & Part P Compliant, Guaranteed & Insured

National Association of Professional Inspectors & Testers Membership No.: 15685

Call Benjamin on 07821 973065 for a FREE Quotation

Shorefield Country Park



**One of the largest & most comprehensively
equipped Leisure Clubs in the area**

- Spacious air conditioned 55 station gymnasium
- 'Reflections' Spa with 6 treatment rooms featuring Elemis and Jessica products
- New 'Expressions' hair salon
- Banquets, Weddings and Functions for up to 200 guests
- Luxurious holiday homes and forest lodges for sale / hire
- Indoor and outdoor pools, sauna, steam room spa bath
- Ample parking



SHOREFIELD
HEALTH AND FITNESS CLUBS

Telephone

REF: ASC

01590 648335

e-mail: leisure@shorefield.co.uk
www.shorefield.co.uk

Shorefield Country Park, Milford on Sea,
Hants SO41 0LH

When replying to Advertisers, please mention "LINK"

The Parish Church of All Saints, Hordle with the Daughter Church of St. Andrew, Tiptoe

www.hordleandtptoechurch.org.uk

E-mail: church.office@hordleandtptoechurch.org.uk

WHO'S WHO

Clergy	Vicar	Rev Phil Mullins	The Vicarage, Stopples Lane Hordle	vicar@hordleandtptoechurch.org.uk	07484 348754
		Rev G Fairbairn	1 The Ferns, Fernhill Road, New Milton.	BH25 5WW	01425 619007
		Rev A Gammon	96 Stopples Lane, Hordle	SO41 0JA	01425 611383
		Rev Dr D Moynagh	Barncroft, Southampton Road, Boldre.	SO41 8PT	01590 622268
Licensed Lay Minister		Miss J Cropp	25 Marine Drive West, Barton on Sea,	BH25 7QJ	01425 616287
Churchwardens		Miss G Morris	17 Rookcliff Way, Milford on Sea, Lymington.	SO41 0SD	01590 642953
		Mr D Argyle	17 Velvet Lawn Road, New Milton.	BH25 5GE	01425 612577
Deputy Churchwarden		Mr E Hood	12 Pegasus Avenue, Hordle, Lymington.	SO41 0HN	01425 615051
Treasurer		Mr A Franklin	15 Fry's Lane, Everton, SO41 0JY	...	01590 718195
Envelopes & Gift Aid		Mr M Scott	22A Lavender Road, Hordle, SO41 0GF	...	01425 618420
PCC Secretary		Mrs M Moynagh	Barncroft, Southampton Road, Boldre.	SO41 8PT	01590 622268
Children's work					
Pastoral Coordinator					
Bell Ringers		Mrs F Webster	4 Dudley Avenue, Hordle, Lymington.	SO41 0HY	...
Sanctuary Guild (Sec.)		Mrs J Cliff	48 Brook Avenue, New Milton.	BH25 5HD	...
Electoral Roll		Mrs R Lambe	29 Acacia Road, Hordle, Lymington.	SO41 0YG	...
LINK Editor		Mrs C Warren	11 Deerleap Way, New Milton.	BH25 5EU	...
LINK Distribution					
LINK Sales & Advertising					
Church Office			All Saints' Memorial Hall, Hordle Lane, Hordle, Lymington.	SO41 0FB	...
					01425 626565

For enquiries and Hall Bookings at Hordle and Tiptoe, please email:
church.office@hordleandtptoechurch.org.uk